

JOB DESCRIPTION

JOB TITLE: FIELD BIOLOGIST
RESPONDS TO: FIELD TESTING MANAGER

=====

JOB PURPOSE:

To assist with the execution and reporting of field trials, some of which may have been assigned directly to the job holder.

NATURE OF THE POSITION:

The job holder will be involved in conducting several field trials a year of which 5+ may be his/her direct responsibility.

KEY ACCOUNTABILITIES:

1. For those trials directly assigned to the job holder, independently plan and execute the operations needed to fulfill the customers’ requirements/objectives.
2. Assist with all operations needed to execute the trials program of the FB supervisor, with minimal day-to-day supervision
3. Ensure all trials records are kept up to date, accurate and entered into ARM or the client’s preferred data capture system and trial progress is recorded within INSITE. Ensure that ARM files and trial reports for assigned trials are completed on time.
4. Ensure that all personal work is conducted to the required legal and company safety standards, and conform to relevant official GLP and GEP guidelines (as appropriate).
5. Assist with trials and general cropping and maintenance tasks, with minimal supervision.
6. Take responsibility for the housekeeping/maintenance of particular site work areas or equipment and may also supervise temporary summer staff.

ESSENTIAL COMPETENCIES (From the bespoke SynTech Set of Competencies)

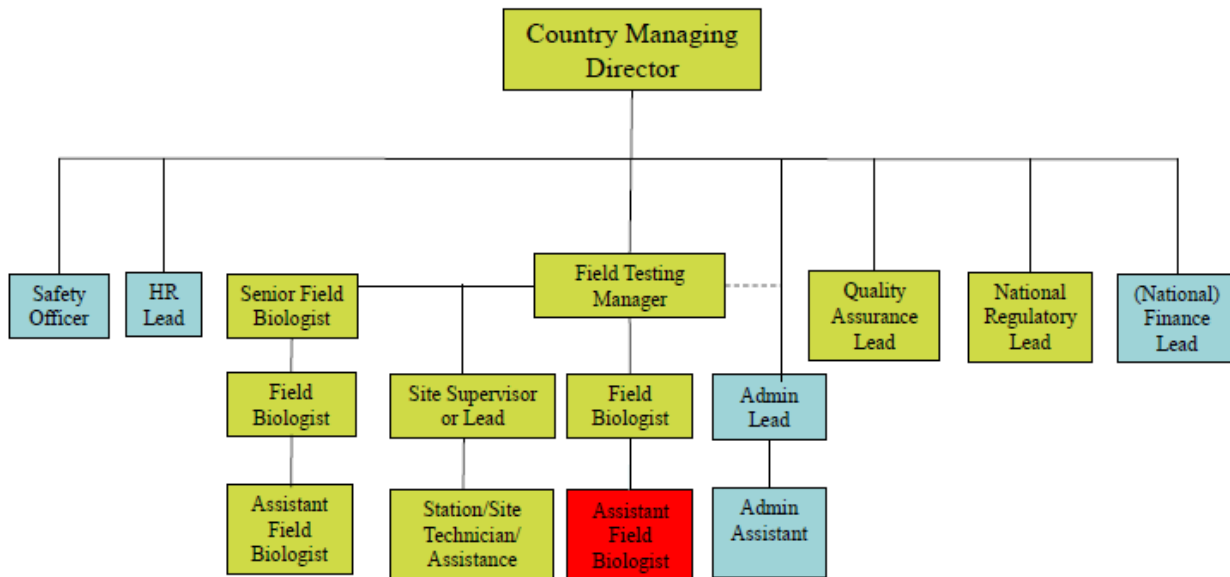
1.1 Time Management 1.2 Organization and Attention to Detail 2.1 Drive for Results
 3.2 Energy 5.1 Adapting to Change 8.1 Clarity 9.1 Build Common Purpose
 10.3 Personal Enthusiasm

KNOWLEDGE AND SKILLS:

Typically the job holder would have a BSc or MSc in an agricultural or biological science and good experience of trials or farm work.

GEENERIC SYNTECH COUNTRY ORGANIZATION CHART showing this job above the post with red background

SynTech Research Organization 2012: In-Country Generic Jobs



NOTE:

Jobs that *may* be present in any Country. (Green: Core R&D roles, Blue: Support).

Additional "roles" e.g. Study Director, Project Manager, Project Lead, and GLP roles e.g. PI may be carried out by staff in this organization. Note the reporting relationship of QA to the MD

