



Bioefficacy (GEP) services

A complete package  
available globally

SynTech<sup>®</sup>  
Research

[www.syntechresearch.com](http://www.syntechresearch.com)

# Bioefficacy (GEP) services

SynTech Research is a global contract research organization, including many seasoned professionals with wide expertise in the research and development of crop protection products. It delivers high quality GEP field, greenhouse and laboratory studies to determine the efficacy and crop safety of both new and existing products, adding value and competitive advantage for clients through in-depth knowledge of the crop protection industry.

## Capabilities

SynTech Research has a reputation as a leading provider of bioefficacy studies at global, regional and country level, to over 150 client companies worldwide.

SynTech has a network of facilities in over 28 countries, many with multiple locations or satellite facilities, ensuring comprehensive coverage of all key crops and targets.

These sites offer a range of bio-efficacy services, including laboratory, greenhouse and field evaluation of agrochemical, bio-pesticide, biocide and seed trait products. Product types tested cover: herbicides, insecticides, fungicides, nematocides, plant growth regulators, fertilizers / crop nutrition, adjuvants, safeners, insect pheromones and other semiochemicals. Trials are conducted on a full range of agricultural and horticultural crops, ornamentals, amenity and public health pests.

Product evaluation takes place during all stages of the R&D process, from early screening through development and registration work, to demonstration trials. In addition to routine efficacy testing, special trials are conducted, such as: crop tolerance/rotation, variety (including GMO) screens, rain-fastness and pest / weed / disease resistance evaluation and monitoring. Application methods used include sprays, granular application and seed treatments, and products are tested for both pre-and post-harvest usage.

The SynTech Research workforce is unrivalled in terms of its industry and agricultural experience. The company provides a design and management service to assist planning of customer's programs and to provide intelligent protocol input. This ensures technical and commercial objectives can be met, and minimizes costs and timescales.



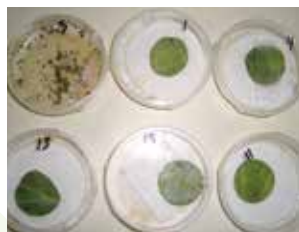
# Specialist studies

In addition to its core offering of trials using conventional foliar or soil applications, SynTech Research provides a range of special laboratory and field services.

These require critical laboratory and/or field facilities and expertise, developed within SynTech's teams and employing industry-standard or purpose-built equipment.

## Laboratory assays

- Screening
- Mode of action



## Field screens including microplots

- Rate and formulation comparisons
- Herbicide, fungicide, insecticide, nematicide and seeds



## Nematode evaluations

- Glasshouse and field crops
- Chemigation, spray and granule applications



## Soil treatments

- Fertilizers and pesticides
- Irrigation applications



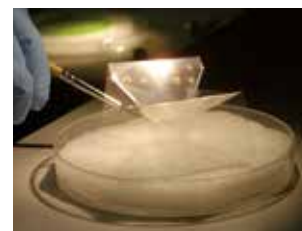
## Product properties

- Rainfastness (field and controlled environment)
- Vapour effects



## Resistance monitoring

- Laboratory and field





# Post-harvest services

## Yield and quality evaluations

- Solids, starch, acidity, minerals, physiology
- Yield, size, weight, firmness and color
- Pre-and post-cold storage assessments



## Processing phase

- Desiccation, concentrates and juice
- Vinification
- Oil production



## Locations

SynTech Research has field trial capabilities worldwide.



The SynTech network of testing facilities in 29 countries in the Americas, Europe and Asia, many with multiple locations or satellite facilities, ensure coverage of all key crops and targets. The provision of locations in both hemispheres allows testing of crop lines year-round, considerably reducing development timescales.



For further information visit  
[www.syntechresearch.com](http://www.syntechresearch.com)  
or email [enquiries@syntechresearch](mailto:enquiries@syntechresearch)

**SynTech**  
Research

Expert services delivering  
competitive advantage